

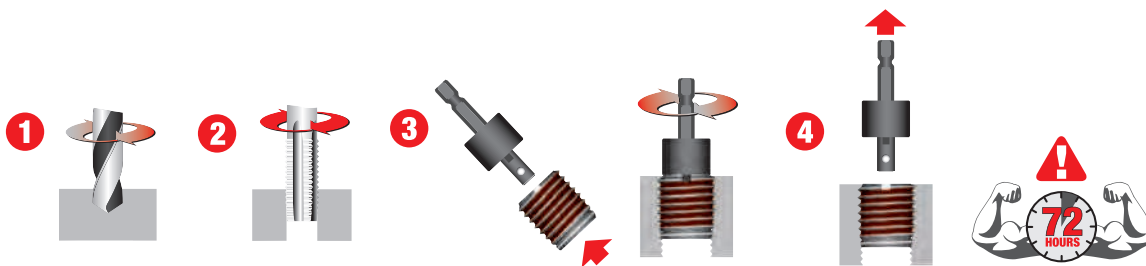


STRONG THREADS IN METAL... EASY STEPS

E-ZSERTS are a solution to a stronger fastener assembly in soft materials as aluminum, magnesium and even cast iron, as well as repairing stripped threads and for use in creating stronger threads in original equipment.

E-ZSERT external threads are manufactured with standard size and pitch to permit the use of standard drills and taps. E-ZSERTS can be installed with a screwdriver, bolt/jam nut, or optional power drive tool.

E-ZSERTS are vibration resistant. Immediately upon installation, microencapsulated adhesive begins to set, and the newly installed inserts are fastener-ready in 3-5 minutes and will not back out. The Loctite® adhesive seals against liquids and gases up to 6,000 psi when fully cured after 72 hours.





CARBON STEEL INSERTS FOR METAL

THIN WALL - UNC & UNF

E-ZSert Part No.	Alternate Part No.	Internal Thread	External Thread	Insert Length	Tap Drill Size	Tap Size	Min Full Thread Depth	Pack Quantity
3334-10GTW	319-332	10-32	5/16-18	.312	I	5/16-18	.375	10
3332-1/4TW	319-4	1/4-20	3/8-16	.375	Q	3/8-16	.437	10
3334-1/4TW	319-428	1/4-28						
3332-5/16TW	319-5	5/16-18	7/16-14	.437	X	7/16-14	.500	5
3332-3/8TW	319-6	3/8-16	1/2-13	.500	29/64	1/2-13	.560	5
3332-1/2TW	319-8	1/2-13	5/8-11	.620	37/64	5/8-11	.680	5

THIN WALL - METRIC COARSE INTERNAL / UNC EXTERNAL

3320-4.00TWF	319-M4	M4-0.7	5/16-18	0.312	I	5/16-18	0.375	10
3320-5.00TWF	319-M5	M5-0.8	5/16-18	0.312	I	5/16-18	0.375	10
3320-6.00TWF	319-M6	M6-1.0	3/8-16	0.375	Q	3/8-16	0.437	5
3320-8.00TWF	319-M8	M8-1.25	7/16-14	0.437	X	7/16-14	0.56	5
3320-10.00TWF	319-M10	M10-1.5	1/2-13	0.5	29/64	1/2-13	0.62	5
3320-12.00TWF	319-M12	M12-1.75	5/8-11	0.625	37/64	5/8-11	0.68	5

HEAVY WALL - UNC & UNF

3332-6GHW	329-006	6-32	1/4-20	.280	7	1/4-20	11/32	10
3332-8GHW	329-008	8-32	5/16-18	.290	F	5/16-18	7/16	10
3332-10GHW	329-3	10-24	3/8-16	.406	5/16	3/8-16	15/32	10
3334-10GHW	329-332	10-32	3/8-16	.406	5/16	3/8-16	15/32	10
3332-1/4HW	329-4	1/4-20	7/16-14	.437	23/64	7/16-14	1/2	10
3334-1/4HW	329-428	1/4-28	7/16-14	.437	23/64	7/16-14	1/2	10
3332-5/16HW	329-5	5/16-18	1/2-13	.484	27/64	1/2-13	9/16	10
3332-3/8HW	329-6	3/8-16	9/16-12	.515	31/64	9/16-12	19/32	10
3332-1/2HW	329-8	1/2-13	3/4-10	.656	21/32	3/4-10	3/4	5
3332-1/2X1HW	329-801	1/2-13	3/4-10	1.000	21/32	3/4-10	1.125	5
3332-9/16HW	329-9	9/16-12	3/4-10	.656	21/32	3/4-10	3/4	5
3332-5/8HW	329-10	5/8-11	7/8-9	.687	49/64	7/8-9	13/16	5
3332-5/8X1.125HW	329-1018	5/8-11	7/8-9	1.125	49/64	7/8-9	1-1/4	5
3332-3/4HW	329-12	3/4-10	1-8	.781	7/8	1-8	7/8	5
3332-1HW	329-16	1-8	1-3/8-12	1.250	1-9/32	1-3/8-12	1-3/8	5

EXTRA HEAVY WALL - UNC

3332-3/8XHW	335-6	3/8-16	5/8-11	.656	17/32	5/8-11	23/32	5
3332-1/2XHW	335-8	1/2-13	7/8-9	.687	49/64	7/8-9	13/16	5

THIN WALL - METRIC COARSE INTERNAL / METRIC EXTERNAL

3320-3.00TWM	450-3	M3-0.5	M6-1.0	6.5mm	5.1mm	M6-1.0	7.8mm	10
3320-4.00TWM	450-4	M4-0.7	M8-1.25	7.5mm	6.9mm	M8-1.25	9.0mm	10
3320-5.00TWM	450-5	M5-0.8	M8-1.25	7.5mm	6.9mm	M8-1.25	9.0mm	10
3320-6.00TWM	450-6	M6-1.0	M10-1.5	10.5mm	8.6mm	M10-1.5	12.0mm	10
3320-8.00TWM	450-8	M8-1.25	M12-1.75	12.5mm	10.4mm	M12-1.75	14.5mm	10
3320-10.00TWM	450-10	M10-1.5	M16-2.0	17.0mm	14.0mm	M16-2.0	19.0mm	10
3320-12.00TWM	450-12	M12-1.75	M16-2.0	17.0mm	14.0mm	M16-2.0	19.0mm	5
3320-16.00TWM	450-16	M16-2.0	M24-3.0	20.0mm	21.0mm	M24-3.0	24.0mm	5

HEAVY WALL - METRIC INTERNAL / UNC EXTERNAL

3320-6.00HWF	650-6	M6-1.0	3/8-16	.406	5/16	3/8-16	15/32	10
3320-8.00HWF	650-8	M8-1.25	1/2-13	.484	27/64	1/2-13	9/16	10
3320-10.00HWF	650-10	M10-1.5	9/16-12	.515	31/64	9/16-12	19/32	10
3320-12.00HWF	650-12	M12-1.75	3/4-10	.656	21/32	3/4-10	3/4	5
3320-16.00HWF	650-16	M16-2.0	1-8	.781	7/8	1-8	7/8	5

HEAVY WALL - 303 STAINLESS STEEL - UNC & UNF

3332-4GHWSS	303-004	4-40	10-32	.250	5/32	10-32	9/32	5
3332-10GHWSS	303-3	10-24	3/8-16	.406	5/16	3/8-16	15/32	5
3334-10GHWSS	303-332	10-32	3/8-16	.406	5/16	3/8-16	15/32	5
3332-1/4HWSS	303-4	1/4-20	7/16-14	.437	23/64	7/16-14	1/2	5
3332-5/16HWSS	303-5	5/16-18	1/2-13	.484	27/64	1/2-13	9/16	5
3332-3/8HWSS	303-6	3/8-16	9/16-12	.515	31/64	9/16-12	19/32	5
3332-1/2HWSS	303-8	1/2-13	3/4-10	.656	21/32	3/4-10	3/4	5

THIN WALL - 303 STAINLESS STEEL - METRIC INTERNAL / METRIC EXTERNAL

3320-5.00TWMSS	453-5	M5-0.8	M8-1.25	7.5mm	6.9mm	M8-1.25	9.0mm	10
3320-6.00TWMSS	453-6	M6-1.0	M10-1.5	10.5mm	8.6mm	M10-1.5	12.0mm	10
3320-8.00TWMSS	453-8	M8-1.25	M12-1.75	12.5mm	10.4mm	M12-1.75	14.5mm	5
3320-10.00TWMSS	453-10	M10-1.5	M16-2.0	17.0mm	14.0mm	M16-2.0	19.0mm	5
3320-12.00TWMSS	453-12	M12-1.75	M16-2.0	17.0mm	14.0mm	M16-2.0	19.0mm	5



Power drive tools are available for high volume installation... See insert tables for catalog numbers and sizes.





KITS

RANGE KITS - HEAVY WALL - CARBON STEEL - INCH SERIES

E-Zsert Part No.	Alternate Part No.	Kit Type	Insert P/N	Qty Inserts	Internal Thread	External Thread
3332-WK1	EZ-C107	UNC #10 to 1/2"	3332-10GHW	10	10-24	3/8-16
			3332-1/4HW	10	1/4-20	7/16-14
			3332-5/16HW	10	5/16-18	1/2-13
			3332-3/8HW	10	3/8-16	9/16-12
			3332-1/2HW	10	1/2-13	5/8-11

RANGE KITS - THIN WALL - CARBON STEEL - METRIC SERIES

3330-WK1	EZ-M100	M5-.8 to M12-1.75	3320-5.00TWM	10	M5-0.8	M8-1.25
			3320-6.00TWM	10	M6-1.0	M10-1.5
			3320-8.00TWM	10	M8-1.25	M12-1.75
			3320-10.00TWM	10	M10-1.5	M16-2.0
			3320-12.00TWM	10	M12-1.25	M16-2.0

SINGLE SIZE KITS - THIN WALL - CARBON STEEL - INCH SERIES

3332-10GTWK	EZ-310-3	All Kits include drill, tap, drive tool and quantity of inserts	3332-10GTW	10	10-24	5/16-18
3334-10GTWK	EZ-310-332		3334-10GTW	10	10-32	5/16-18
3332-1/4TWK	EZ-310-4		3332-1/4TW	10	1/4-20	3/8-16
3334-1/4TWK	EZ-310-428		3334-1/4TW	10	1/4-28	3/8-16
3332-5/16TWK	EZ-310-5		3332-5/16TW	10	5/16-18	7/16-14
3334-5/16TWK	EZ-310-524		3334-5/16TW	10	5/16-24	7/16-14
3332-3/8TWK	EZ-310-6		3332-3/8TW	10	3/8-16	1/2-13
3334-3/8TWK	EZ-310-624		3334-3/8TW	10	3/8-24	1/2-13
3332-7/16TWK	EZ-310-7		3332-7/16TW	10	7/16-14	9/16-12
3332-1/2TWK	EZ-310-8		3332-1/2TW	10	1/2-13	5/8-11

SINGLE SIZE KITS - HEAVY WALL - CARBON STEEL - INCH SERIES

3332-10GHWK	EZ-329-3	All Kits include drill, tap, drive tool and quantity of inserts	3332-10GHW	10	10-24	3/8-16
3334-10GHWK	EZ-329-332		3334-10GHW	10	10-32	3/8-16
3332-1/4HWK	EZ-329-4		3332-1/4HW	10	1/4-20	7/16-14
3334-1/4HWK	EZ-329-428		3334-1/4HW	10	1/4-28	7/16-14
3332-5/16HWK	EZ-329-5		3332-5/16HW	10	5/16-18	1/2-13
3334-5/16HWK	EZ-329-524		3334-5/16HW	10	5/16-24	1/2-13
3332-3/8HWK	EZ-329-6		3332-3/8HW	10	3/8-16	9/16-12
3334-3/8HWK	EZ-329-624		3334-3/8HW	10	3/8-24	9/16-12
3332-7/16HWK	EZ-329-7		3332-7/16HW	10	7/16-14	5/8-11
3332-1/2HWK	EZ-329-8		3332-1/2HW	10	1/2-13	3/4-10
3334-1/2HWK	EZ-329-820		3334-1/2HW	10	1/2-20	3/4-10
3332-9/16HWK	EZ-329-9		3332-9/16HW	5	9/16-12	3/4-10
3332-5/8HWK	EZ-329-918		3332-5/8HW	5	5/8-11	7/8-9

SINGLE SIZE KITS - THIN WALL - CARBON STEEL - METRIC

3320-4.00TWMK	EZ-450-4	All Kits include drill, tap, drive tool and quantity of inserts	3320-4.00TWM	10	M4-0.7	M8-1.25
3320-5.00TWMK	EZ-450-5		3320-5.00TWM	10	M5-0.8	M8-1.25
3320-6.00TWMK	EZ-450-6		3320-6.00TWM	10	M6-1.0	M10-1.5
3320-8.00TWMK	EZ-450-8		3320-8.00TWM	10	M8-1.25	M12-1.75
3320-10.00TWMK	-		3320-10.00TWM	10	M10-1.5	M16-2.0
3320-12.00TWMK	-		3320-12.00TWM	10	M12-1.75	M16-2.0
3320-16.00TWMK	-		3320-16.00TWM	10	M16-2.0	M24-3.0

SINGLE SIZE KITS - HEAVY WALL - 303 STAINLESS - INCH

3332-10GHWSSK	-	All Kits include drill, tap, drive tool and quantity of inserts	3332-10GHWSS	10	10-24	3/8-16
3334-10GHWSSK	-		3334-10GHWSS	10	10-32	3/8-16
3332-1/4HWSSK	-		3332-1/4HWSS	10	1/4-20	7/16-14
3332-5/16HWSSK	-		3332-5/16HWSS	10	5/16-18	1/2-13
3332-3/8HWSSK	-		3332-3/8HWSS	10	3/8-16	9/16-12
3332-1/2HWSSK	-		3332-1/2HWSS	10	1/2-13	3/4-10

SINGLE SIZE KITS - THIN WALL - 303 STAINLESS - METRIC

3320-5.00TWMSSK	-	All Kits include drill, tap, drive tool and quantity of inserts	3320-5.00TWMSS	10	M5-0.8	M8-1.25
3320-6.00TWMSSK	-		3320-6.00TWMSS	10	M6-1.0	M10-1.5
3320-8.00TWMSSK	-		3320-8.00TWMSS	10	M8-1.25	M12-1.75
3320-10.00TWMSSK	-		3320-10.00TWMSS	10	M10-1.5	M16-2.0
3320-12.00TWMSSK	-		3320-12.00TWMSS	10	M12-1.75	M16-2.0



APPLICATIONS FOR THREAD INSERTS & EXTERNAL THREAD REPAIR



Automotive

- Engine Overhaul
- Gear Box Housings
- Disc Brakes
- Exhaust Systems
- Armored Vehicles
- Truck Overhaul

Electronics

- Mounting Plates for Electrical Components
- Cable TV Line Boxes
- Electrical Appliances



Aerospace

- Turbine Engines
- Seat Fixtures
- Electronics
- Landing Gears



Machines & Plant

- Printing Presses
- High Temperature Applications
- Repeated Assembly & Disassembly of Machinery
- General Maintenance & Repair



Other Applications

- Gas Turbines
- Mining Equipment
- Oil Drilling Machinery
- Outdoor Equipment
- Heavy Equipment



External Thread Repair Applications

- Truck Rebuilding
- Oil Drilling Machinery
- Ship Maintenance
- Threaded Stud Applications where disassembly of the part is expensive and time consuming.