

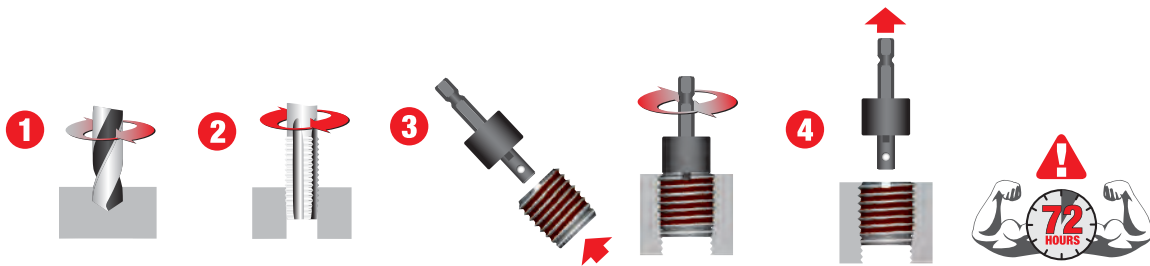


## STRONG THREADS IN METAL... EASY STEPS

BONDSERT provide a stronger fastener assembly in soft materials such as aluminum, magnesium and even cast iron. They can be used for repairing stripped threads, and for use in creating stronger threads in original equipment.

BONDSERT external threads are manufactured with standard size and pitch to permit the use of standard drills and taps. BONDSERT can be installed with a screwdriver, bolt/jam nut, or power drive tool.

BONDSERT are vibration resistant. Within minutes of installation, the Loctite™ 204 adhesive begins to set, and the newly installed inserts are fastener-ready within 5 minutes and will not back out. In addition, the Loctite™ 204 adhesive seals against liquids and gases up to 6,000 psi when fully cured after 72 hours.





## CARBON STEEL INSERTS FOR METAL

### THIN WALL - UNC & UNF

BONDSERT Part No.	Alternate Part No.	Internal Thread	External Thread	Insert Length	Tap Drill Size	Tap Size	Min Full Thread Depth	Pack Quantity
3334-10GTW	319-332	10-32	5/16-18	.312	I	5/16-18	.375	10
3332-1/4TW	319-4	1/4-20	3/8-16	.375	Q	3/8-16	.437	10
3334-1/4TW	319-428	1/4-28						
3332-5/16TW	319-5	5/16-18	7/16-14	.437	X	7/16-14	.500	5
3332-3/8TW	319-6	3/8-16	1/2-13	.500	29/64	1/2-13	.560	5
3332-1/2TW	319-8	1/2-13	5/8-11	.620	37/64	5/8-11	.680	5

### HEAVY WALL - UNC & UNF

3332-6GHW	329-006	6-32	1/4-20	.280	7	1/4-20	11/32	10
3332-8GHW	329-008	8-32	5/16-18	.290	F	5/16-18	7/16	10
3332-10GHW	329-3	10-24	3/8-16	.406	5/16	3/8-16	15/32	10
3334-10GHW	329-332	10-32	3/8-16	.406	5/16	3/8-16	15/32	10
3332-1/4HW	329-4	1/4-20	7/16-14	.437	23/64	7/16-14	1/2	10
3334-1/4HW	329-428	1/4-28	7/16-14	.437	23/64	7/16-14	1/2	10
3332-5/16HW	329-5	5/16-18	1/2-13	.484	27/64	1/2-13	9/16	10
3332-3/8HW	329-6	3/8-16	9/16-12	.515	31/64	9/16-12	19/32	10
3332-1/2HW	329-8	1/2-13	3/4-10	.656	21/32	3/4-10	3/4	5
3332-1/2X1HW	329-801	1/2-13	3/4-10	1.000	21/32	3/4-10	1.125	5
3332-5/8HW	329-10	5/8-11	7/8-9	.687	49/64	7/8-9	13/16	5
3332-5/8X1.125HW	329-1018	5/8-11	7/8-9	1.125	49/64	7/8-9	1-1/4	5
3332-3/4HW	329-12	3/4-10	1-8	.781	7/8	1-8	7/8	5
3332-1HW	329-16	1-8	1.3/8-12	1.250	1-9/32	1.3/8-12	1-3/8	5

### EXTRA HEAVY WALL - UNC

3332-1/4XHW	335-4	1/4-20	1/2-13	.484	27/64	1/2-13	9/16	10
3332-5/16XHW	335-5	5/16-18	9/16-12	.515	31/64	9/16-12	19/32	10
3332-3/8XHW	335-6	3/8-16	5/8-11	.656	17/32	5/8-11	23/32	5
3332-1/2XHW	335-8	1/2-13	7/8-9	.687	49/64	7/8-9	13/16	5

### THIN WALL - METRIC COARSE INTERNAL / METRIC EXTERNAL

3320-3.00TWM	450-3	M3-0.5	M6-1.0	6.5mm	5.1mm	M6-1.0	7.8mm	10
3320-4.00TWM	450-4	M4-0.7	M8-1.25	7.5mm	6.9mm	M8-1.25	9.0mm	10
3320-5.00TWM	450-5	M5-0.8	M8-1.25	7.5mm	6.9mm	M8-1.25	9.0mm	10
3320-6.00TWM	450-6	M6-1.0	M10-1.5	10.5mm	8.6mm	M10-1.5	12.0mm	10
3320-8.00TWM	450-8	M8-1.25	M12-1.75	12.5mm	10.4mm	M12-1.75	14.5mm	10
3320-10.00TWM	450-10	M10-1.5	M16-2.0	17.0mm	14.0mm	M16-2.0	19.0mm	10
3320-12.00TWM	450-12	M12-1.75	M16-2.0	17.0mm	14.0mm	M16-2.0	19.0mm	5
3320-16.00TWM	450-16	M16-2.0	M24-3.0	20.0mm	21.0mm	M24-3.0	24.0mm	5

### HEAVY WALL - METRIC INTERNAL / UNC EXTERNAL

3320-6.00HWF	650-6	M6-1.0	3/8-16	.406	5/16	3/8-16	15/32	10
3320-8.00HWF	650-8	M8-1.25	1/2-13	.484	27/64	1/2-13	9/16	10
3320-10.00HWF	650-10	M10-1.5	9/16-12	.515	31/64	9/16-12	19/32	10
3321-10.00HWF	650-10F	M10-1.25	9/16-12	.515	31/64	9/16-12	19/32	10
3320-12.00HWF	650-12	M12-1.75	3/4-10	.656	21/32	3/4-10	3/4	5
3320-16.00HWF	650-16	M16-2.0	1-8	.781	7/8	1-8	7/8	5

### HEAVY WALL - 303 STAINLESS STEEL - UNC & UNF

3332-10GHWSS	303-3	10-24	3/8-16	.406	5/16	3/8-16	15/32	5
3332-1/4HWSS	303-4	1/4-20	7/16-14	.437	23/64	7/16-14	1/2	5
3332-5/16HWSS	303-5	5/16-18	1/2-13	.484	27/64	1/2-13	9/16	5
3332-3/8HWSS	303-6	3/8-16	9/16-12	.515	31/64	9/16-12	19/32	5
3332-1/2HWSS	303-8	1/2-13	3/4-10	.656	21/32	3/4-10	3/4	5

### THIN WALL - 303 STAINLESS STEEL - METRIC INTERNAL / METRIC EXTERNAL

3320-5.00TWMSS	453-5	M5-0.8	M8-1.25	7.5mm	6.9mm	M8-1.25	9.0mm	10
3320-6.00TWMSS	453-6	M6-1.0	M10-1.5	10.5mm	8.6mm	M10-1.5	12.0mm	10
3320-8.00TWMSS	453-8	M8-1.25	M12-1.75	12.5mm	10.4mm	M12-1.75	14.5mm	5
3320-10.00TWMSS	453-10	M10-1.5	M16-2.0	17.0mm	14.0mm	M16-2.0	19.0mm	5
3320-12.00TWMSS	453-12	M12-1.75	M16-2.0	17.0mm	14.0mm	M16-2.0	19.0mm	5



Power drive tools are available for high volume installation... See insert tables for catalog numbers and sizes.





## KITS

### RANGE KITS - HEAVY WALL - CARBON STEEL - INCH SERIES

BONDSERT Part No.	Alternate Part No.	Kit Type	Insert P/N	Qty Inserts	Internal Thread	External Thread
3332-WK1	EZ-C107	UNC #10 to 1/2"	3332-10GHW	10	10-24	3/8-16
			3332-1/4HW	10	1/4-20	7/16-14
			3332-5/16HW	10	5/16-18	1/2-13
			3332-3/8HW	10	3/8-16	9/16-12
			3332-1/2HW	10	1/2-13	5/8-11
3332-WK0		UNC #10 to 7/16"	3332-10GHW	10	10-24	3/8-16
			3332-1/4HW	10	1/4-20	7/16-14
			3332-5/16HW	10	5/16-18	1/2-13
			3332-3/8HW	10	3/8-16	9/16-12
			3332-7/16HW	8	7/16-14	5/8-11
3332-WK2		UNC 1/2" to 1"	3332-1/2HW	6	1/2-13	3/4-10
			3332-5/8HW	7	5/8-11	7/8-9
			3332-3/4HW	5	3/4-10	1-8
			3332-1HW	5	1-8	1.3/8-12

### RANGE KITS - THIN WALL - CARBON STEEL - METRIC SERIES

3330-WK2	EZ-M100	M5-.8 to M12-1.75	3320-5.00TWM	10	M5-0.8	M8-1.25
			3320-6.00TWM	10	M6-1.0	M10-1.5
			3320-8.00TWM	10	M8-1.25	M12-1.75
			3320-10.00TWM	10	M10-1.5	M16-2.0
			3320-12.00TWM	10	M12-1.25	M16-2.0
3320-WK1		M8-1.25 to M16-2.0	3320-8.00TWM	10	M8-1.25	M12-1.75
			3320-10.00TWM	10	M10-1.5	M16-2.0
			3320-12.00TWM	8	M12.1.75	M16-2.0
			3320-16.00TWM	5	M16-2.0	M24-3.0
3320-WK0		M3.05 to M8-1.25	3320-3.00TWM	10	M3-.05	M6-1.0
			3320-4.00TWM	10	M4-0.7	M8-1.25
			3320-5.00TWM	10	M5-0.8	M8-1.25
			3320-6.00TWM	10	M6-1.25	M10-1.5
			3320-8.00TWM	10	M8-1.25	M12-1.75

### RANGE KITS - THIN WALL - STAINLESS STEEL - UNC

3332-SSWK1		UNC #10 to 1/2"	3332-10GHWSS	10	10-24	3/8-16
			3332-1/4HWSS	10	1/4-20	7/16-14
			3332-5/16HWSS	10	5/16-18	1/2-13
			3332-3/8HWSS	10	3/8-16	9/16-12
			3332-1/2HWSS	6	1/2-13	3/4-10

### RANGE KITS - THIN WALL - STAINLESS STEEL - METRIC SERIES

3320-SSWK1		M5-0.8 to M12-1.25	3320-5.00TWM	10	M5-0.8	M8-1.25
			3320-6.00TWM	10	M6-1.0	M10-1.5
			3320-8.00TWM	10	M8-1.25	M12-1.75
			3320-10.00TWM	10	M10-1.5	M16-2.0
			3320-12.00TWM	8	M12-1.75	M16-2.0





## KITS

### SINGLE SIZE KITS - THIN WALL - CARBON STEEL - INCH SERIES

3332-10GTWK	EZ-310-3	All Kits include drill, tap, drive tool and quantity of inserts	3332-10GTW	10	10-24	5/16-18
3334-10GTWK	EZ-310-332		3334-10GTW	10	10-32	5/16-18
3332-1/4TWK	EZ-310-4		3332-1/4TW	10	1/4-20	3/8-16
3334-1/4TWK	EZ-310-428		3334-1/4TW	10	1/4-28	3/8-16
3332-5/16TWK	EZ-310-5		3332-5/16TW	10	5/16-18	7/16-14
3332-3/8TWK	EZ-310-6		3332-3/8TW	5	3/8-16	1/2-13
3332-1/2TWK	EZ-310-8		3332-1/2TW	5	1/2-13	5/8-11

### SINGLE SIZE KITS - HEAVY WALL - CARBON STEEL - INCH SERIES

3332-10GHWK	EZ-329-3	All Kits include drill, tap, drive tool and quantity of inserts	3332-10GHW	10	10-24	3/8-16
3334-10GHWK	EZ-329-332		3334-10GHW	10	10-32	3/8-16
3332-1/4HWK	EZ-329-4		3332-1/4HW	10	1/4-20	7/16-14
3334-1/4HWK	EZ-329-428		3334-1/4HW	10	1/4-28	7/16-14
3332-5/16HWK	EZ-329-5		3332-5/16HW	10	5/16-18	1/2-13
3332-3/8HWK	EZ-329-6		3332-3/8HW	5	3/8-16	9/16-12
3332-7/16HWK	EZ-329-7		3332-7/16HW	5	7/16-14	5/8-11
3332-1/2HWK	EZ-329-8		3332-1/2HW	5	1/2-13	3/4-10
3332-5/8HWK	EZ-329-918		3332-5/8HW	5	5/8-11	7/8-9

### SINGLE SIZE KITS - THIN WALL - CARBON STEEL - METRIC

3320-4.00TWMK	EZ-450-4	All Kits include drill, tap, drive tool and quantity of inserts	3320-4.00TWM	10	M4-0.7	M8-1.25
3320-5.00TWMK	EZ-450-5		3320-5.00TWM	10	M5-0.8	M8-1.25
3320-6.00TWMK	EZ-450-6		3320-6.00TWM	10	M6-1.0	M10-1.5
3320-8.00TWMK	EZ-450-8		3320-8.00TWM	5	M8-1.25	M12-1.75
3320-10.00TWMK	-		3320-10.00TWM	5	M10-1.5	M16-2.0
3320-12.00TWMK	-		3320-12.00TWM	5	M12-1.75	M16-2.0

### SINGLE SIZE KITS - HEAVY WALL - 303 STAINLESS - INCH

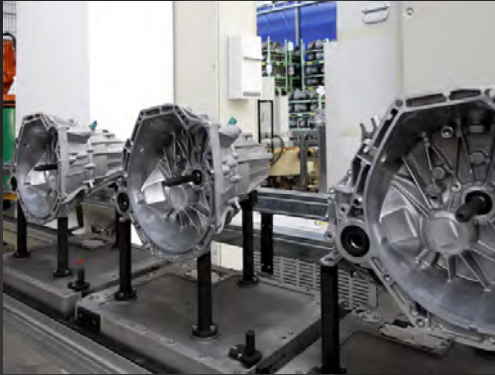
3332-10GHWSSK	-	All Kits include drill, tap, drive tool and quantity of inserts	3332-10GHWSS	10	10-24	3/8-16
3332-1/4HWSSK	-		3332-1/4HWSS	10	1/4-20	7/16-14
3332-5/16HWSSK	-		3332-5/16HWSS	10	5/16-18	1/2-13
3332-3/8HWSSK	-		3332-3/8HWSS	5	3/8-16	9/16-12
3332-1/2HWSSK	-		3332-1/2HWSS	5	1/2-13	3/4-10

### SINGLE SIZE KITS - THIN WALL - 303 STAINLESS - METRIC

3320-5.00TWMSSK	-	All Kits include drill, tap, drive tool and quantity of inserts	3320-5.00TWMSS	10	M5-0.8	M8-1.25
3320-6.00TWMSSK	-		3320-6.00TWMSS	10	M6-1.0	M10-1.5
3320-8.00TWMSSK	-		3320-8.00TWMSS	10	M8-1.25	M12-1.75
3320-10.00TWMSSK	-		3320-10.00TWMSS	5	M10-1.5	M16-2.0
3320-12.00TWMSSK	-		3320-12.00TWMSS	5	M12-1.75	M16-2.0



# APPLICATIONS FOR THREAD INSERTS & EXTERNAL THREAD REPAIR



## Automotive

- Engine Overhaul
- Gear Box Housings
- Disc Brakes
- Exhaust Systems
- Armored Vehicles
- Truck Overhaul

## Electronics

- Mounting Plates for Electrical Components
- Cable TV Line Boxes
- Electrical Appliances



## Aerospace

- Turbine Engines
- Seat Fixtures
- Electronics
- Landing Gears



## Machines & Plant

- Printing Presses
- High Temperature Applications
- Repeated Assembly & Disassembly of Machinery
- General Maintenance & Repair



## Other Applications

- Gas Turbines
- Mining Equipment
- Oil Drilling Machinery
- Outdoor Equipment
- Heavy Equipment



## External Thread Repair Applications

- Truck Rebuilding
- Oil Drilling Machinery
- Ship Maintenance
- Threaded Stud Applications where disassembly of the part is expensive and time consuming.